

Analyzing the Teacher Population of Hoover City Schools

December 2006

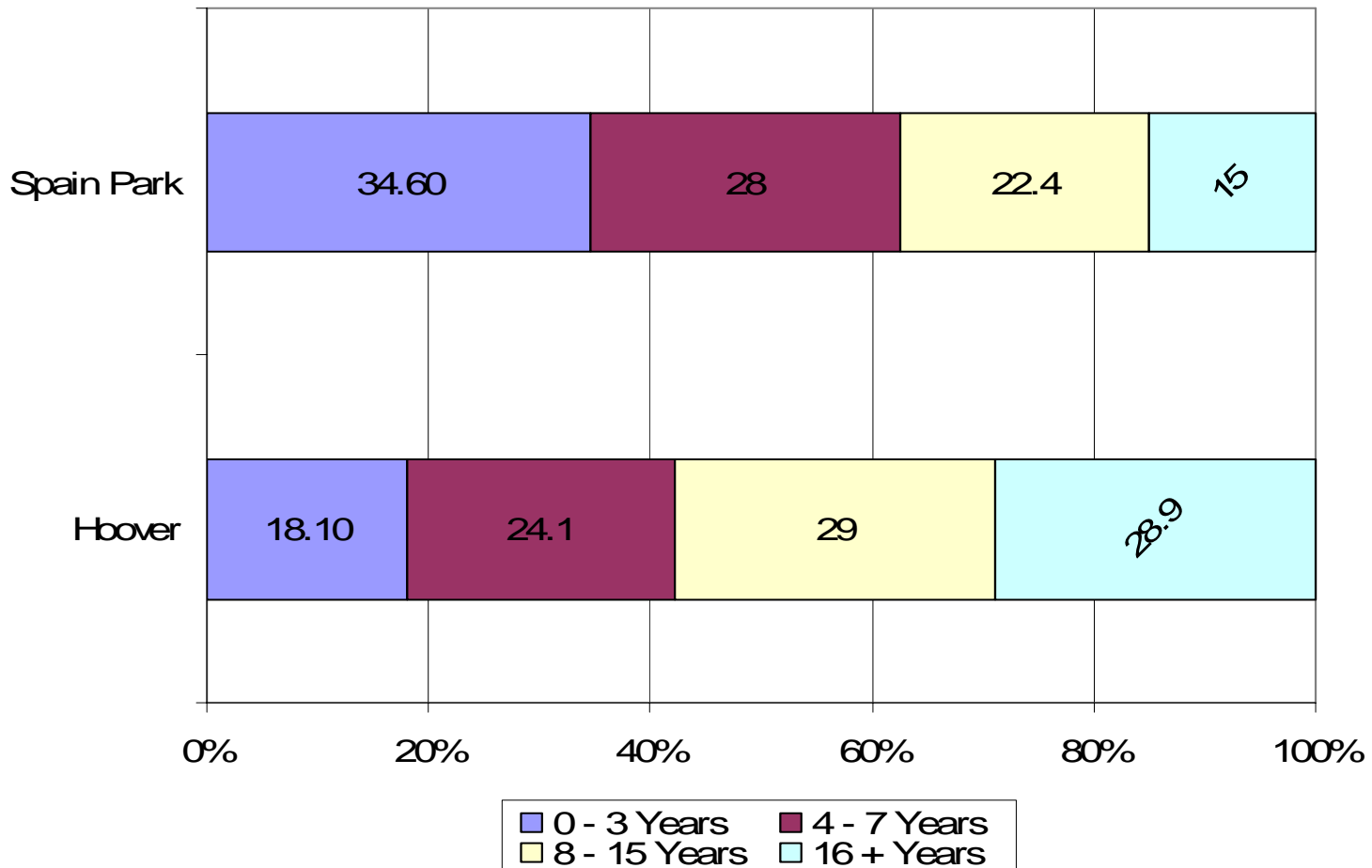
Hoover School Community Information Network

Notes

- We looked at teachers paid from Salary Schedule B (188 days) only
- Numbers within bars show percentage of total teacher population, as number of actual teachers vary greatly among schools
- No judgments are made regarding years of experience or degree/certification obtained.

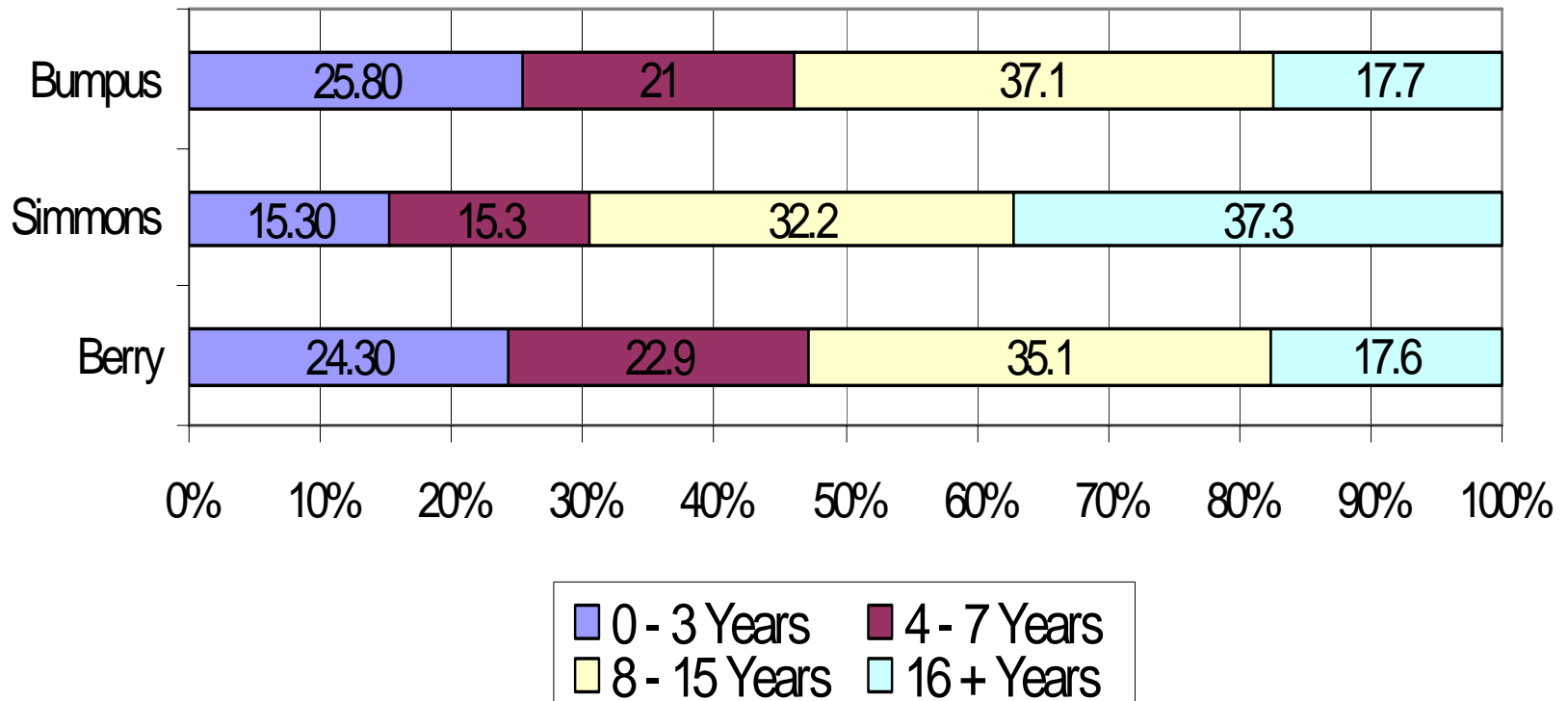
High School Teachers Years of Experience by School

Numbers Represent % of Total Teacher Population



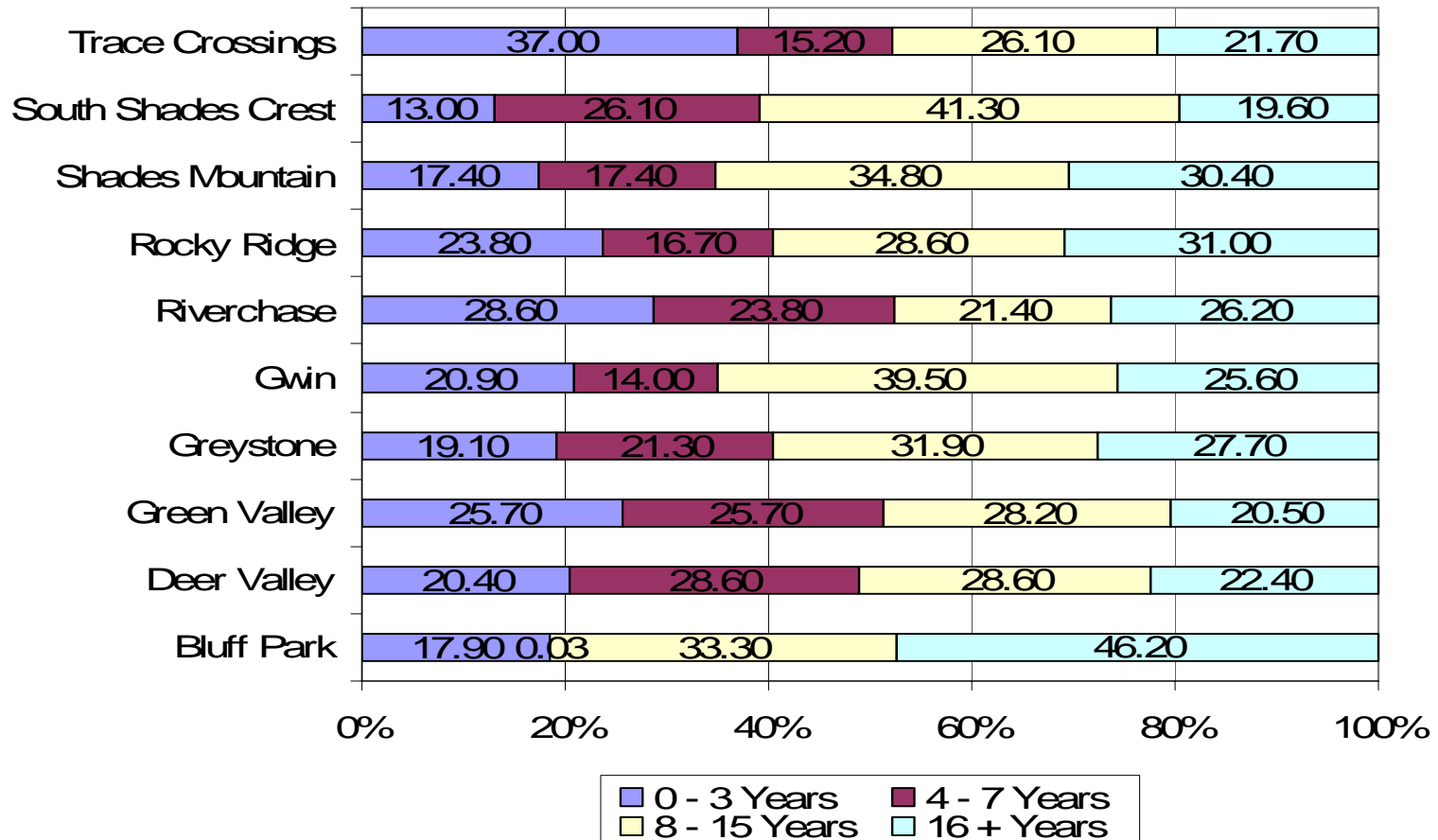
Middle School Teachers Years of Experience by School

Numbers Represent % of Total Teacher Population

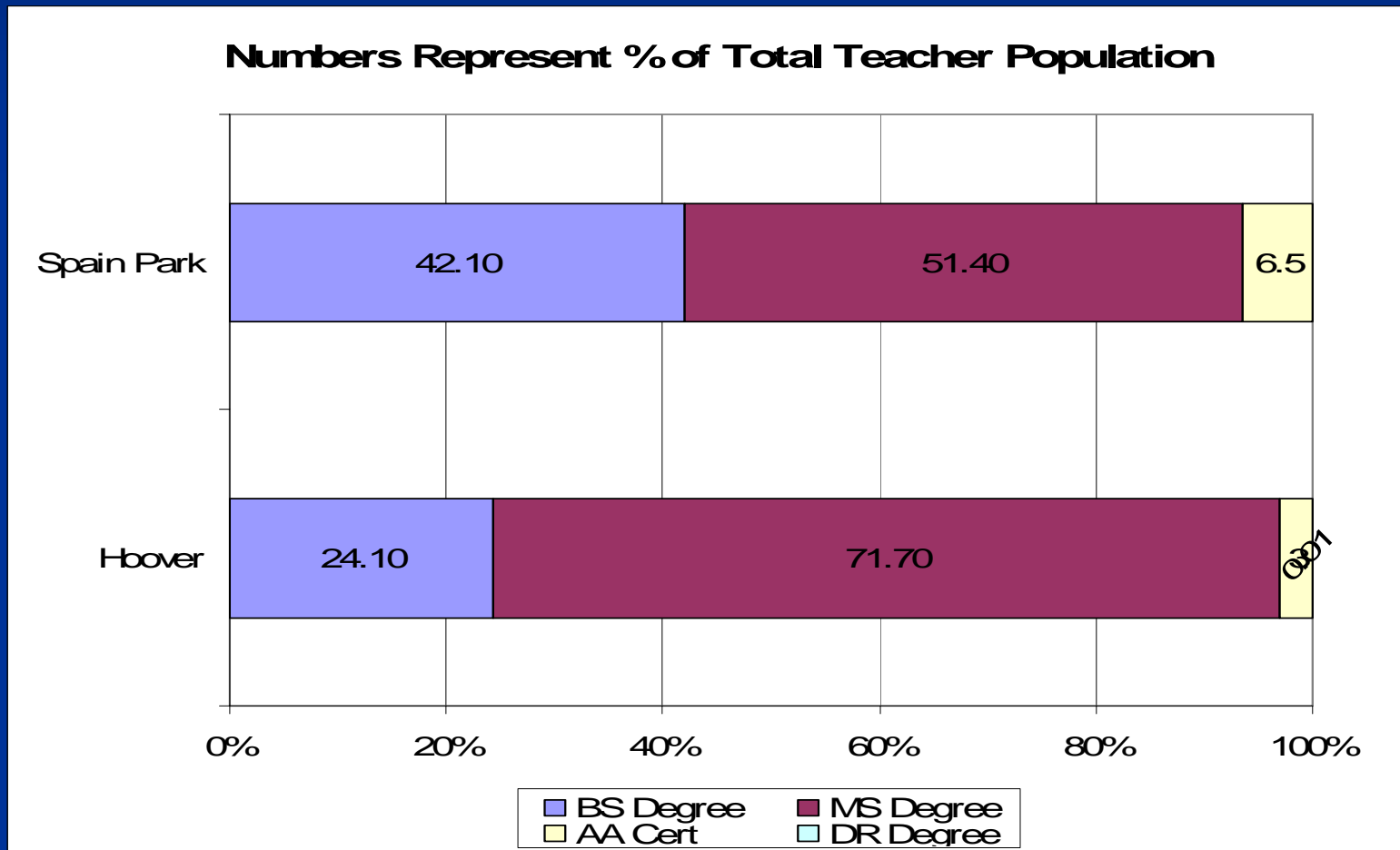


Elementary Teachers Years of Experience by School

Numbers Represent % of Total Teacher Population

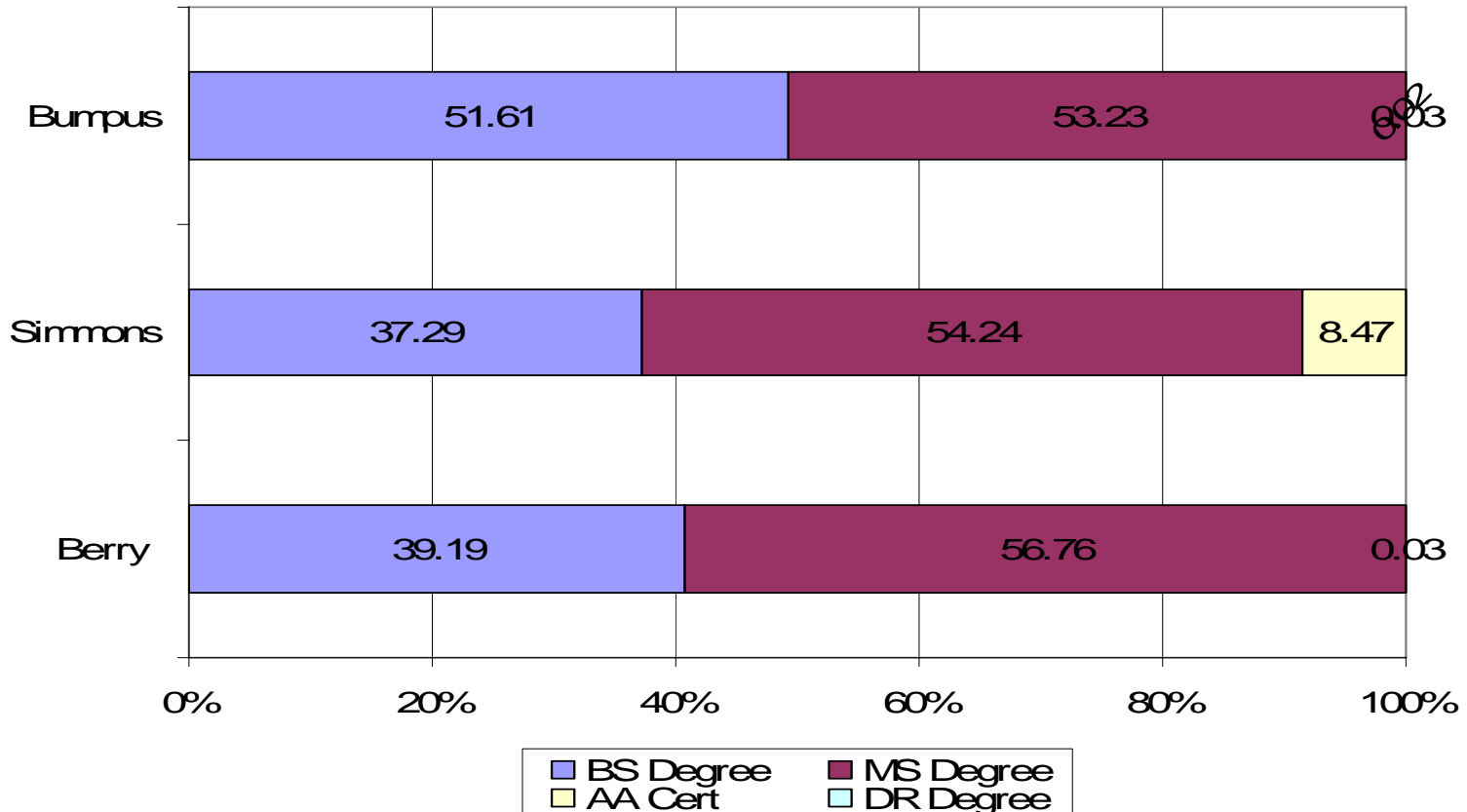


High School Teachers Degree/Certification Type



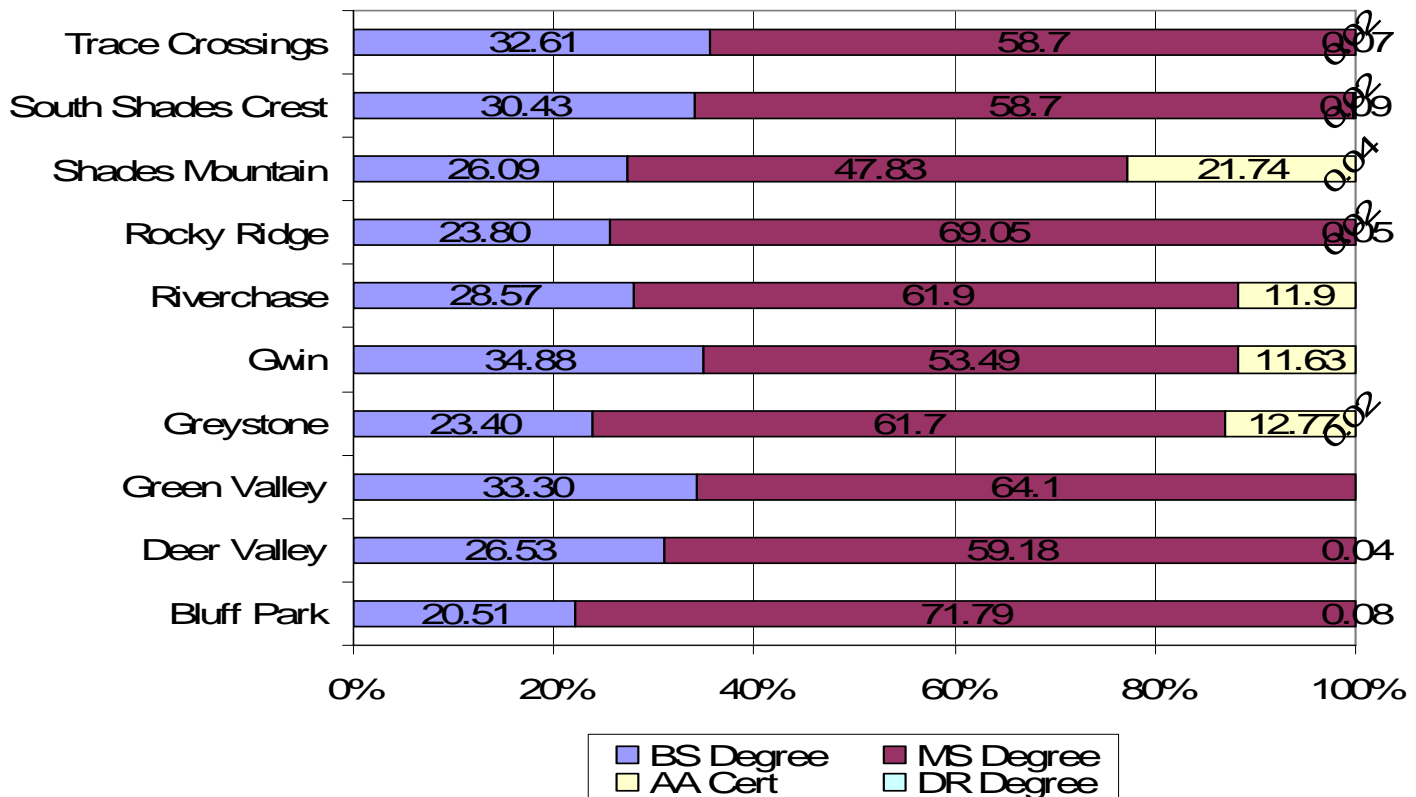
Middle School Teachers Degree/Certification Type

Numbers Represent % of Total Teacher Population



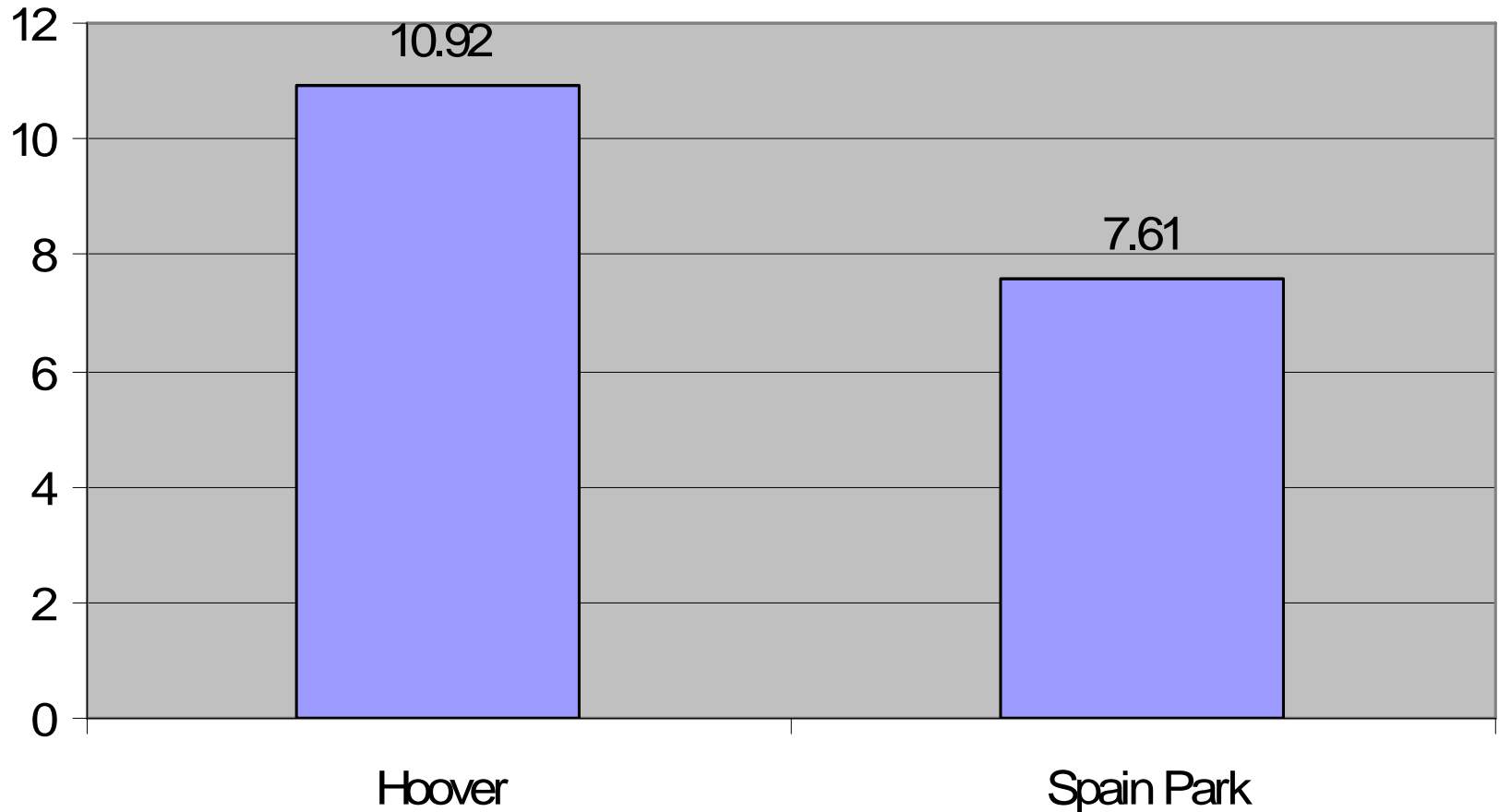
Elementary Teachers Degree/Certification Type

Numbers Represent % of Total Teacher Population



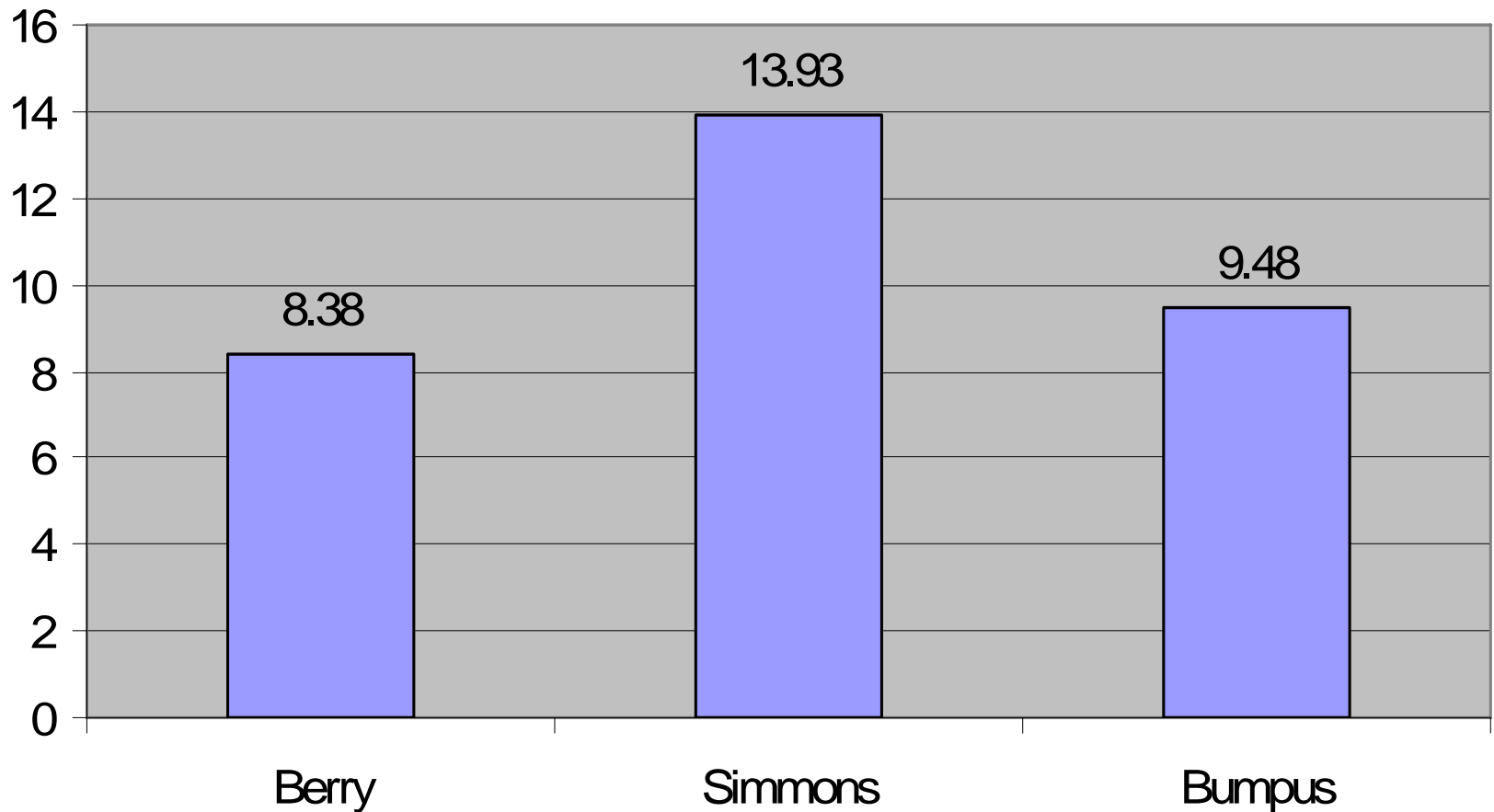
High School Teachers

Average Years of Experience Per Teacher



Middle School Teachers

Average Years of Experience Per Teacher



Elementary School Teachers Average Years of Experience Per Teacher

